

TAFELBERG SCHOOL



Newsletter



18 FEBRUARY – 1ST TERM – NUMBER 06

CORE VALUES : RESPECT ... RESPONSIBILITY ... HONESTY ... CARING



Past pupil news : 2020 Timothy Rockman starts his university career at UWC (B Admin), while Serena Gorman has recently completed her Masters (School Counsellor) at New York University, 2019.

coolideas
FIBRE INTERNET

2 Swellengrebel Avenue, Bothasig 7441; PO Box 28376, Bothasig, 7406
Telephone: (021) 558-2405 Fax No: (021) 558-8155

Dear Parent

The WCED has identified three focus areas for schools in 2020. The areas identified, are functionality of schools, quality education and sound school governance. The staff and Tafelberg Governing Body support these focus areas. We are a well-administered school, with skilled staff ensuring quality education happens in all classes, and governed by a knowledgeable and competent school Governing Body. However, excellence is a journey, and we cannot remain complacent and rest on the good we have done. We must keep moving forward, innovate and climb the next rung on the ladder. We do not seek perfection, but rather quality and excellence in what we do, with what we have, at this moment in time. We call on all parents and learners to support the school in working at these focus areas this year, and strengthening our values program and the Change Mindset (T2P) program. Together, nothing is too difficult, and we will improve.



NB INFORMATION

1. NB dates

20 Feb	Inter-house athletics (Gr 1 – 12) at Parow track
21 Feb	NB : school ends @ 1pm for grades 3 - 12
28 Feb	Inter-schools gala @ Tafelberg (school ends at 1pm for grades 3-12)
29 Feb	Inter-schools athletics @ Paarl school
02 Mar	Test Series start – Junior school (normal school hometimes)
03 Mar	Test Series start – Senior school (normal school hometimes)
10 Mar	PTA meeting @ 6pm
14 Mar	Tafelberg games evening
20 Mar	Term 1 : school closes @ 10:30 / Reports handed to all learners

2. School fees 2020

Tafelberg is a Section 21 fee-paying school, and the SA Schools Act thus places a duty on the SGB to collect such school fees from all parents as agreed upon at the parent AGM. The Budget and school fees for 2020 were voted on at the parent AGM on 13 November 2019. The Budget, school fee increase and certain policies (e.g. Code of Conduct, Uniform and Appearance, Language, Textbook, Religious, and Admission policies among others) were tabled and accepted by unanimous parent vote at the AGM.

TIER	FEE PER MONTH (11 months)	FEE : ANNUAL AMOUNT
1. Grades 1 – 3	R1 980-00	R21 780-00
2. Grades 4 – 9	R1 825-00	R20 075-00
3. Grades 10 – 12	R1 980-00	R21 780-00

- 10% discount on fees if paid in full before end of February 2020
- First Debit Order run : 1st working day of each month
- Fees are paid over 11 months, starting January 2020 (for 2020 fees)
- Exemptions and non-payment of fees are dealt with as per legislation and school policy.
- All enquiries regarding payment of school fees and exemptions must be directed only to Mrs M Vicentini @ 021 558 2405 or bursar@tafelbergschool.co.za

GENERAL NEWS

1. Staff news

We welcome Mrs McGee back from maternity leave, and she will resume her duties as Head of Intermediate Phase. I would like to sincerely thank Mrs Joemat for helping us out during Mrs McGee's absence – we were privileged to be able to call on someone of her calibre. Mrs Stimpson (Grade 3) is on maternity leave as from Monday. We wish her well during this time. Mrs House will substitute for Mrs Stimpson for the next 4 months.

2. Coronavirus (covid-19)

Learners have been informed of the virus, and preventative measures. Please read the information attached at the end of this Newsletter, and reinforce the measures, such as washing hands and using tissues when sneezing/coughing (and then disposing of them in a bin). Should your child show any of the symptoms, please seek medical help as soon as possible, and inform the school. Thank you for your co-operation.

3. PTA

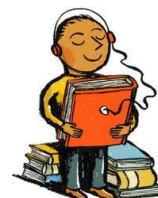
The PTA have had two meetings thus far in 2020. They have set ambitious targets for 2020, and identified certain needs that will be addressed soon. We all need to support the PTA in reaching their 2020 fundraising target. Together we can improve our school for the benefit of all our learners. Please support this outstanding group of parents whom work selflessly to improve the facilities at our school. Please remember to use your MySchool and Makro cards (make Tafelberg the beneficiary) – it costs nothing, yet brings in much needed funds for the PTA. Thank you for your support.



4. Test Series

We are looking forward to how well our learners are going to perform in the upcoming Test Series. We know they can do well if they put in the effort and have set realistic targets. Please continue to encourage your child and monitor their studying to ensure that they are preparing properly for the upcoming Test Series. Reminders :

- Absenteeism during the writing of a FAT will require a medical certificate
- Any irregularity (i.e. dishonesty or cheating in any way, not following instructions, disruptions etc.) during the completion of a FAT, will result in a SAIC meeting with the learner and parent at school. This may result in the learner receiving zero (0) for the particular FAT/Test.
- Core notes will be available from 21 February and a link to Google drive will be emailed to all parents.



5. CCTV

We remind parents and learners that the school grounds, corridors and classrooms are covered by CCTV cameras. We have almost completed upgrading the entire system. All footage is securely stored for a certain length of time, for school use only.

6. Interhouse athletics

The interhouse athletics meeting will be held at the Parow. Please read the information letter which was given to all learners, and appeared at the end of last week's Newsletter.

7. Reminders

- Please return all completed Reply Slips so that we can update our data base.
- Please remind your child of the safety measures at school, and to stay out of demarcated areas.
- No learner may leave the school premises without the proper authorization.
- No learner nor parent may take and or distribute any photograph and or video showing any Tafelberg learner on school grounds or outside the immediate school premises.
- The school in no way endorses any product, service or entity (nor any claim made by them) advertised in this Newsletter.

SPORT

Sport	Practice	Match
Snr Swimming	Tuesday 18 & 25 Feb	-
Jnr Swimming	Thursday 27 Feb	-
Snr Cricket	Tuesday 25 Feb	Tuesday 18 Feb vs Axios
Jnr Cricket	Thursday 18 & 25 Feb	-
Athletics	Tuesday 18 Feb	20 Feb 2020 – Parow Athletics Track
Girls Soccer	Tuesday 18 & 25 Feb	-



THE LAW AND YOU

LEARNERS

Language policy of public schools

6. (2) The governing body of a public school may determine the language policy of a school subject to the Constitution, this Act and any applicable provincial law.

SOUTH AFRICAN SCHOOLS ACT 84 OF 1996

QUIZ : Who carried the SA flag at the 2016 Olympic opening ceremony?

LAST WEEKS ANSWER : no

THOUGHT : The rung of a ladder was never meant to rest upon, but only to hold a man's foot long enough to enable him to put the other somewhat higher - T Huxley

A handwritten signature in black ink, appearing to read 'L Benecke'.

Mr L Benecke

ENTER TO LEARN, LEAVE TO SERVE

CORONAVIRUS

WHAT IS CORONAVIRUS?

Coronaviruses are large groups of viruses that are common amongst animals. These viruses can make people sick, usually with a mild to moderate upper respiratory tract illness, similar to a common cold.

A new coronavirus called COVID-19 was identified in China and is associated with an outbreak of pneumonia.

HOW IT SPREADS

The COVID-19 spreads mainly via respiratory droplets produced when an infected person coughs or sneezes.

The COVID-19 is spread through:

- The air by coughing and sneezing
- Close personal contact such as touching or shaking hands
- Touching an object or surface with the virus on it, then touching your mouth, nose or eyes before washing your hands

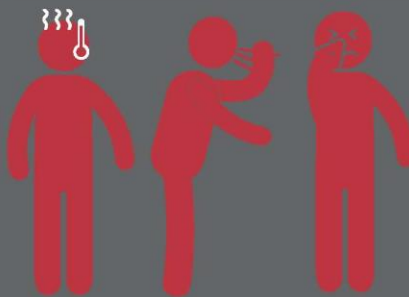


SYMPTOMS

Mild to severe respiratory illness with

- fever
- cough
- difficulty breathing
- sore throat

The complete clinical picture with regards to COVID-19 is still not clear. Patients with underlying illness and the elderly appear to be at increased risk of severe illness.



WHO IS AT GREATER RISK?

Currently travellers to Wuhan, China and other affected areas of China are at greatest risk of infection.

TREATMENT

Treatment is supportive (e.g. provide oxygen for patients with shortness of breath or treatment for fever).

- There is no specific antiviral treatment available.
- Antibiotics do not treat viral infections. However, antibiotics may be required if bacterial secondary infection develops.

PREVENTION

There are currently no vaccines available to protect you against COVID-19 infection. Transmission is reduced through:



Washing hands often



Avoid touching with unwashed hands



Avoid close contact with infected people



Cover your cough or sneeze with a tissue, once used throw away.

If you are mildly sick, keep yourself hydrated, stay at home, and rest.

MEASURES IN PLACE

Fever screening is in place at international airports.

- Procedures are in place for case detection, isolation and management for quick diagnosis to be made.
- All health facilities will be able to manage suspected or confirmed cases and refer to the appropriate referral or designated hospital.
- Protocols are in place for follow up of case contacts to ensure that the virus does not spread.



Contact the **General Public Hotline 011 386 2000**. It operates from Monday to Friday, 08:00 to 16:00.



Western Cape
Government
Health

BETTER TOGETHER.