

Resource Centre & *IE Team Newsletter*

The Directorate of Inclusive and Specialized Education released a full-service school plan for 2020/2021, which was derived from the Education Sector audit in 2018/2019. The Auditor-General of South Africa found several shortcomings in the functionality of full-service schools across the country. As a result, provinces were requested to focus on strengthening existing full-service schools. Therefore, the WCED requested Inclusive Education Outreach teams to provide support to these schools.

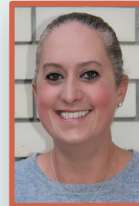
Tafelberg School's Inclusive Education (IE) team together with the Circuit Based Support Team (CBST) identified three full-service schools namely Alpha Primary, Du Noon Primary and Northway Primary to support this year. The Tafelberg IE Team consists of three team members: a Psychologist (Mrs Kidd), an Occupational Therapist (Mrs Platt) and a Speech and Language Therapist (Ms van den Berg). The IE team and CBST had meetings with the schools to identify their needs and to collaboratively plan the type of support required.

At Northway Primary, the IE team started with weekly integrated 'Therapy At Your Fingertips' sessions with the Gr R Afrikaans and English classes. These focused on essential school readiness skills such as fine motor skills, number concepts, vocabulary as well as emotional development. Tafelberg School's Resource Centre will support Du Noon and Alpha Primary by providing workshops and online training.

Furthermore, the IE team continued to screen learners on the Tafelberg screening list to determine the level of support they need and if learners are candidates for our school. Feedback and recommendations are provided to the learner's parents and current school after screening. In addition, support was provided to mainstream and full-service schools by means of assessments completed by the IE team.



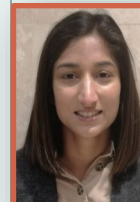
Kerri
Oosterberg



Samantha
Hiles



Nazneen
Adam



We would like to welcome Kerri Oosterberg as our Foundation Phase representative on the Resource Centre.

We thank Samantha Hiles for her contribution during her time with the Resource Centre.

Nazneen Adam joined the Resource Centre team this semester during Chanelle Shankland's maternity leave.

INSIDE THIS ISSUE

- Workshops at Tafelberg School 2
- Outreach Support in MNED 3
- Find us on the internet..... 4

WORKSHOPS AT TAFELBERG SCHOOL



GOOGLE TRAINING AT TAFELBERG

For the last few months, since March, the Senior School has been attending various workshops on Google Education. The 12 Module course covers the main Google Suite applications generally used in Education. The aim of the workshop is to better prepare teachers for hybrid / blended teaching.

BECOMING A THERA-PARENT

Parents from Tafelberg School attended the “Becoming a Thera-parent” workshop on 17 February 2021. Occupational Therapists, Speech-Language Therapists, Psychologists and a Physiotherapist presented the workshop at the school’s clubhouse. Parents received useful strategies to support their children during homework time. They also received a free Thera-parent DVD and book, which they could use at home, as well as a certificate for successful completion of the course.



HELPING YOUR ANXIOUS CHILD

Carey-Lee Vermoter and Agnes Steenkamp, from the Psychology Department, presented an online workshop for parents that included practical tips on how to support anxious children. The workshop was available from 19th to 30th April 2021 and targeted learners from Foundation Phase to High School. The workshop has been made public and can continue to be viewed on the following link: <https://www.youtube.com/watch?v=7su4cvnqYMc>.

OUTREACH SUPPORT IN MNED

HOLISTIC INTERVENTION IN THE CLASSROOM

Tafelberg School educators were requested to present on the topic “Holistic Intervention in the Classroom”. The Foundation Phase educators received case studies from one of our outreach schools, with areas of concern for each learner and their current intervention in the classroom.

The educators engaged in case discussions and formulated intervention strategies and behaviour modification ideas for educators to use with their learners.

A PowerPoint presentation was prepared for the school. It included specific ideas and tips for each of the learners identified in the case studies. This presentation is also a valuable resource for educators to use in their classrooms with all learners.

SCRIBE TRAINING AND ASSESSMENT ACCOMMODATIONS

Assessment accommodations are designed to equalize opportunities and provide the necessary support for all learners by addressing the barriers to assessments that they may experience. Support for learners is intended to enable them to give a true account of their knowledge and skills.

The standard of the assessment should not be compromised and the learner may not be given an unfair advantage over his/her peers. The WCED requires that all persons involved in administering the approved concessions (reading, writing and prompting) be properly trained in what is allowed during the scribing process. They should also be in possession of a WCED scribing certificate.

To assist the Department in this endeavour, the Resource Centre at Tafelberg School presents scribe training workshops, that are under the auspices of the WCED and a certificate is issued accordingly after completion of the training sessions.

The course consists of 2 sessions. The first session is 6 hours long and the second session is 2 hours long. After the first session, attendees need to scribe a learner and submit a recording of the session.

The Resource Centre presents three scribe training workshops during the year, one per term.

The first term's training was successfully completed and participants received their certificates. Currently, we are halfway through the second term's workshop. We are very proud of our team, who has presented professional and successful workshops.



Find us on the internet

Remember to visit our Facebook page (Tafelberg School Resource Centre).

Make sure to have a look at the Resource Centre section on the Tafelberg School website, where you can find previous newsletters as well as some useful tips and ideas.

